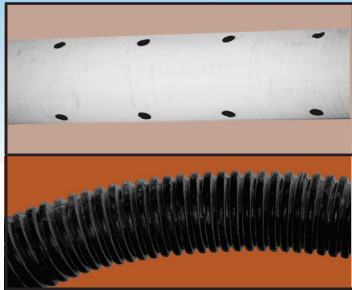


# PRODUCT COMPARISONS

PRODUCT COMPARISONS

*IT IS IMPORTANT THAT CONSUMERS ARE FULLY EDUCATED ON AVAILABLE BASEMENT WATERPROOFING SYSTEMS. WHEN FULLY EDUCATED, THE CHOICE IS EASY.*



## PVC Pipe / Corrugated Pipe & Stone System

1. Pipe can be purchased in any store.

2. Anyone can install, non-specialized.

3. System installed to 12" depth under floor.

4. Visible gap may be left after concrete installed.

5. Limited warranty.

6. Circular holes / small slotted holes on pipe.

7. Can be used for interior arteries and floor cracks.



## Pre-set Depth System #1

Conduit supplied by manufacturer. Training necessary.

Only manufacturer's representatives can install – specialized.

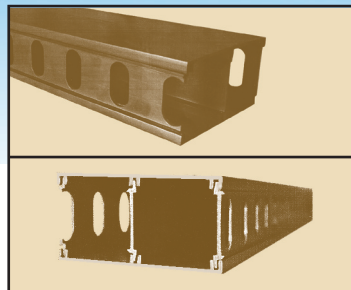
System installed only 4" under floor.

Has 3/8" gap on wall, may catch water from wall.

Warranty available.

Circular holes in back only.

Cannot be used for interior arteries.



## Pre-set Depth System #2

Conduit supplied by manufacturer. No proven track record – limited history on proven performance.

Anyone can install, but specialized.

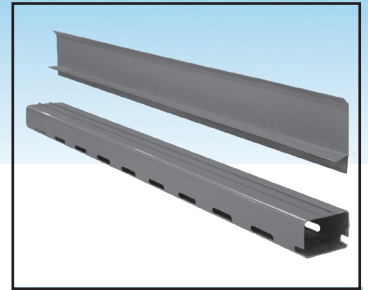
Manufacturer unclear how to install – all trial and error – possible failure. "Rolled product"

Manufacturer does not specify how to handle – big question dependent on installer.

Limited warranty.

Double chamber does not allow for self-cleaning – system holes tend to clog. Does not handle proper water volume. Allows stone into system.

Can be used for interior arteries – but tends to clog. Does not wash.



## Patented Water Trek Aqua Route® System

Conduit supplied by manufacturer. Training necessary.

Only fully trained manufacturer's representatives can install – specialized.

System installed as needed. Depth will be custom tailored – not predetermined.

Has 1/16" – 1/4" gap on wall – designed to catch water from wall.

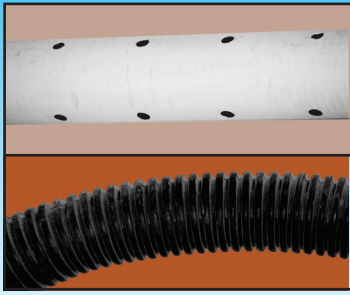
Warranty available.

Specialized holes in front and back.

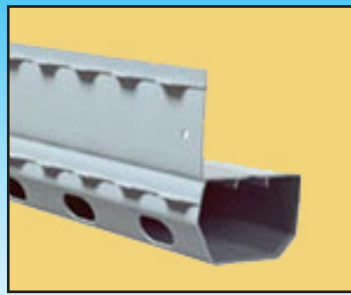
Can be used for interior arteries and floor cracks.



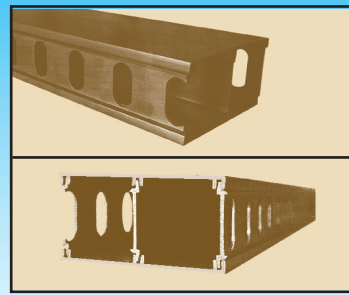
## AVAILABLE BASEMENT WATER PROOFING SYSTEMS PRODUCT COMPARISONS



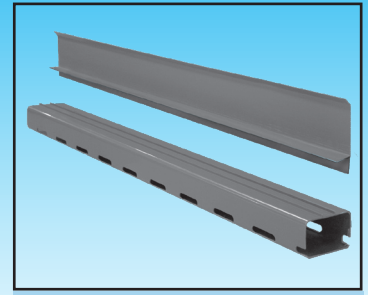
### PVC Pipe / Corrugated Pipe & Stone System



### Pre-set Depth System #1



### Pre-set Depth System #2



### Patented Water Trek Aqua Route® System

8. Pipe purchased in stores; non-specialized contractors can install; service problems may affect warranty.	Specialized company installs, honoring warranty.	Conduit can be purchased by any contractor. No proven track record. New experimental product.	Specialized company installs, honoring warranty.
9. Pipe easily clogs with dirt and mud caused by significant depth. Addresses "insignificant water".	System designed to be installed on footing only. If installed on dirt, may clog.	Pipe easily clogs due to chambers. Does not self-wash. Designed to "get around" existing patents.	System can be installed on footing or in front – will not clog due to <b>holes in front and back</b> tends to self-wash.
10. Significant depth activates pump unnecessarily. Pumps do not last as long.	Addresses water threatening floor but not in front of footing due to holes on inside only.	Addresses water from footing and in front but only handles 1/2 the flow and can clog.	Addresses water threatening floor surface in front and back of footing. Pumps will last longer.
11. Depth of installation may cause structural problems. Under wash of footings.	No structural threat.	Unknown depth. Untested new product.	No structural threat.
12. Job is very messy; trauma to homeowner and basement.	Job is cleaner, less stressful, less time consuming.	Tends to take longer due to "snap together" interior construction of product. Comes in a roll to save contractor money.	Job is cleaner, less stressful, less time consuming.
13. Sump location may vary.	Sump location limited to lowest spot.	Sump location limited to lowest spot.	Sump location <b>customized</b> to individual application.
14. No ridge on top – cannot attach to concrete.	No ridge on top – cannot attach to concrete.	No ridge on top – cannot attach to concrete.	<b>Ridge on top</b> will attach firmly to concrete.
15. Flange on top can vary.	Flange on top has 3/8" gap.	Variable flange – no consistency.	Flange on top <b>fits tight to wall</b> but allows water from wall cracks or windows to enter system. <b>Prevents odors.</b>
16. Holes on front and back or all around pipe. Excessive depth may allow easy clogging.	Holes on backside only; does not self-wash; does not address water in front of footing.	Open conduit cannot self-wash. Conduit only handles 1/2 volume – tends to clog.	Holes on front and back tends to <b>self-wash</b> and address water in front of footing as well as, footing/wall joint.

**AT BUSY DOG BASEMENT TECHNOLOGIES EDUCATION IS OUR BEST SELLING TOOL – TO PROTECT YOUR MOST VALUABLE POSSESSION ... THE CHOICE IS EASY!**

[www.1800busydog.com](http://www.1800busydog.com)®

