

ELITE CRETE™

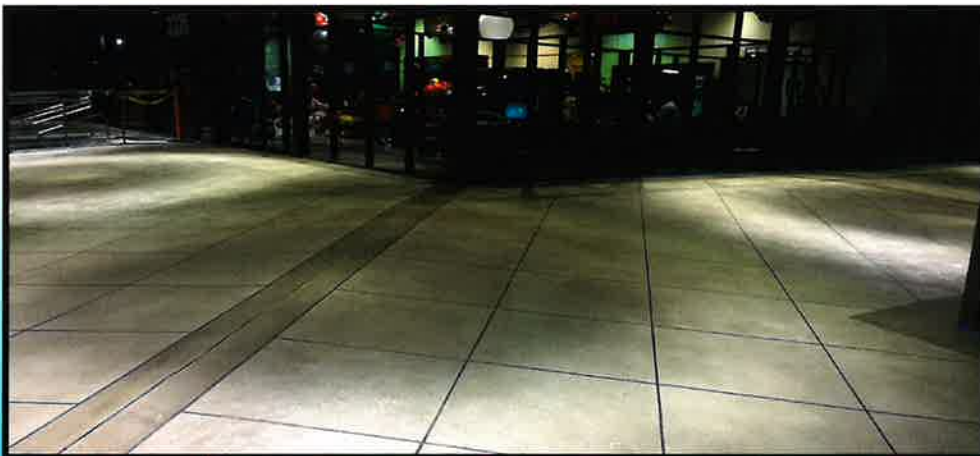
THIN FINISH CONCRETE FLOOR & WALL OVERLAYS

Basement Technologies
The Basement Specialists™
Structural/Remodeling Division

Interior/Exterior Floor & Wall "Thin Finish"

Finish your floor with a design color of your choice. This unique advanced floor and wall system is unique utilizing your choice of colors and designs. This system can be used on any concrete surface.

- Walls or floors
- Economical
- Fast
- Designer Finishes
- Goes right over existing concrete



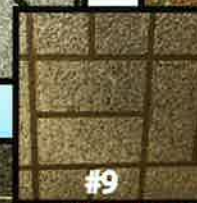
Why
remove old
slabs to get
a designer
finish?

**Thin Finish: we offer
9 designs to choose from**

Upper End Thin Finish
(hand finish and trowel done)



Economical Finishes



1-800-BUSY DOG®



Copyright © 2017 BTD. All Rights Reserved.

POOL DECK, DRIVEWAY AND PATIO COATINGS

Pool Deck Coatings are polymer modified to act as surface repair or an aesthetic finish that can be applied to new or existing concrete surfaces. The coating is actually stronger than concrete and can withstand vehicular traffic and harsh temperatures (extreme hot or cold).

- Virtually unlimited designs, patterns, textures and color options
- Non-slip, even when wet
- Can create the authentic look and feel of any stone, brick, tile, wood and even just plain new concrete
- Available in any color combination to match surrounding design
- Cost effective compared to: full depth stamped concrete, pavers brick, real stone or integrally colored concrete
- Extreme durability for high traffic areas
- Very low maintenance
- Highly resistant to deicing salts, freeze/thaw climates, extreme heat wet conditions and UV rays
- Quick installation time
- Can be installed pre- or post-construction
- For new or existing concrete surfaces



Digital catalog of finishes available.
See elitecrete.com

1-800-BUSY DOG®

